

134K-RW-USB-D1 +

134.2Khz ISO11784/11785 RFID reader/writer with USB interface

+

T5567 RFID Reader/Writer

Writer Program User Guide

USB driver installation

Remarks :

Don't connect the USB reader with the PC when running below auto USB driver setup

[1] insert the USB driver disk to CD-ROM :

run the auto setup program from the following path :

cd-rom drive : \USB To Virtual Com driver\CP210x_VCP_Win2K_XP_S2K3.exe

windows OS support : 2000 , XP , Vista & 2003 server

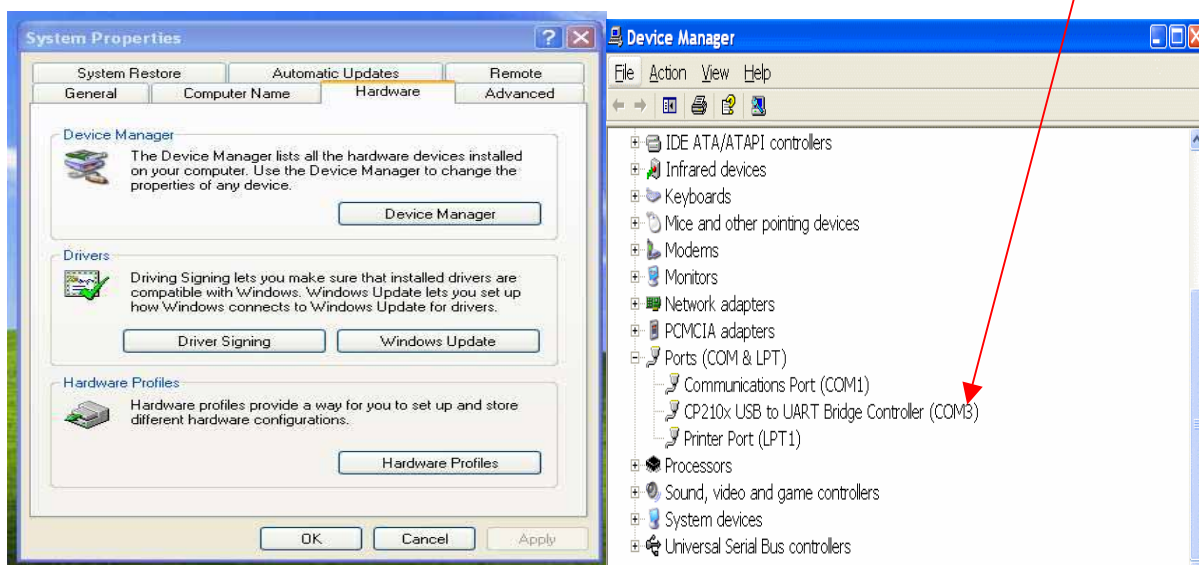


[2] After driver installation → connect the USB reader to the PC's USB port with a USB cable .

Then the PC will find the reader and install the "USB to UART Bridge" driver automatically.

[3] After installation successfully , you will find "CP210xUSB to UART Bridge Controller (Com3)" as follow message from the control panel/system/hardware/device manager/port(COM & LPT) .

(may be see other COM port #, not the COM3 which is depend on your PC's hardware configuration)



ISO11784 EM4305 Demo Program - user guide

Setup connection

- [1] Make sure the USB driver installation successfully
- [2] copy full directory from the CD path : \ISO11784\demo program to your local PC
- [3] run the demo program from the path : \ISO11784\demo program\EM4305 Demo.exe
- [4] select a suitable "Com Port" No.

If fails , Pls check or re-install the "USB to Serial" driver again.

EM4305 DEMO

Communication Port
Port: COM3

Protection
☐ Manchester RF/64 ☒ Bi-phase RF/32
Address: 1
Data: 51190816
Read Write

Configuration Word
Encoder + Data Rate
☐ Manchester RF/64 ☒ Bi-phase RF/32
LWR
LWR:
Configuration Switches
☐ Read Login ☐ Disable
☐ Write Login ☐ Reader Talk First
☐ Pigeon mode
Write

Read EM ID
Customer Code:
Data Item:
Read EM4001 Write EM4001

Read Animal ID
Animal ☒ Data ☐
National: 0211D36EF6
Country: 009C
CRC: B874
Trailer:
Read Write

Login PassWord
Password: Login
New PassWord: Write

Read/Write EEPROM
☐ Word 0 ☐ Word 1 ☐ Word 2 ☐ Word 3
☐ Word 4 ☐ Word 5 ☐ Word 6 ☐ Word 7
☐ Word 8 ☐ Word 9 ☐ Word A ☐ Word B
☐ Word C ☐ Word D ☐ Word E
Read Protection Bits Set Protection Bits

Others
Disable Card
Field ON Field OFF

How to read/write ISO11784/11785 data format

- [1] put the EM4205/EM4305 ear tag on the reader
- [2] enter ISO11784/11785 data , then click on "write"
- [3] Click on "Read" to read data

How to read and write internal memory data

[1] click on "Bi-phase RF/32"

[2] put the EM4205/EM4305 tag on the reader

[3] Refer to below memory map , input the memory address and data

[4] click on "Write " to write the data to the specify memory address

[5] click on "Read" to read the data from the specify memory address

Below is the memory Map

Addr. (dec)	Description	Type	B _{0,1} .. b ₃₁
0	Chip Type, Res Cap Customer code/ User free	RW	ct ₀ - Ct ₃₁
1	UID number	RA	uid ₀ - uid ₃₁
2	Password	WO	ps ₀ - ps ₃₁
3	User free	RW	us ₀ - us ₃₁
4	Configuration word	RW	co ₀ - co ₃₁
5	User free	RW	us ₀ - us ₃₁
6	User free	RW	us ₀ - us ₃₁
7	User free	RW	us ₀ - us ₃₁
8	User free	RW	us ₀ - us ₃₁
9	User free	RW	us ₀ - us ₃₁
10	User free	RW	us ₀ - us ₃₁
11	User free	RW	us ₀ - us ₃₁
12	User free	RW	us ₀ - us ₃₁
13	User free	RW	us ₀ - us ₃₁
14	Protection word 1	RP	pr ₀ - pr ₃₁
15	Protection word 2	RP	pr ₀ - pr ₃₁

Table 5

Word types:

RA: access using Read Word command only

RW: access using Read Word and Write Word command

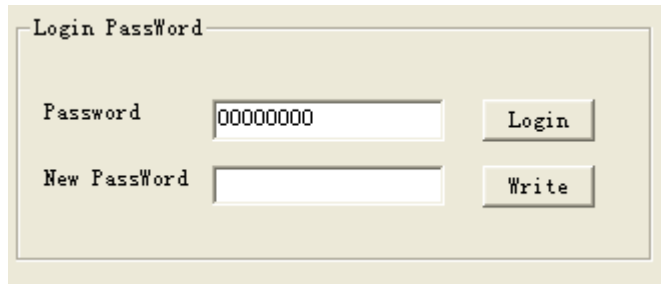
WO: access using Write Word command only

RP: access using Read Word and Protect command

How to login by password

Default password is 00000000.

Input "New Password" then click on "Write" to change the password



Login Password

Password

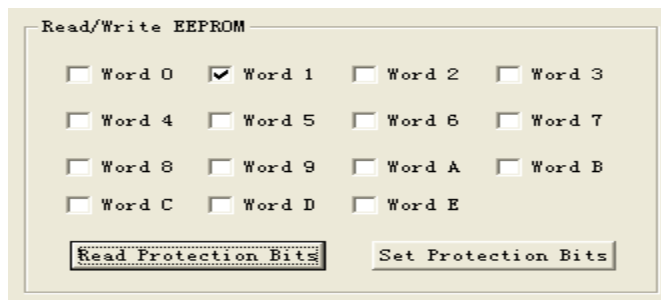
New Password

How to set the protection bits

Tick to select which word is needed for protection

click on "Set protection Bits" to save

click on "Read protection Bits" to read the protection bit status



Read/Write EEPROM

☐ Word 0 ☒ Word 1 ☐ Word 2 ☐ Word 3

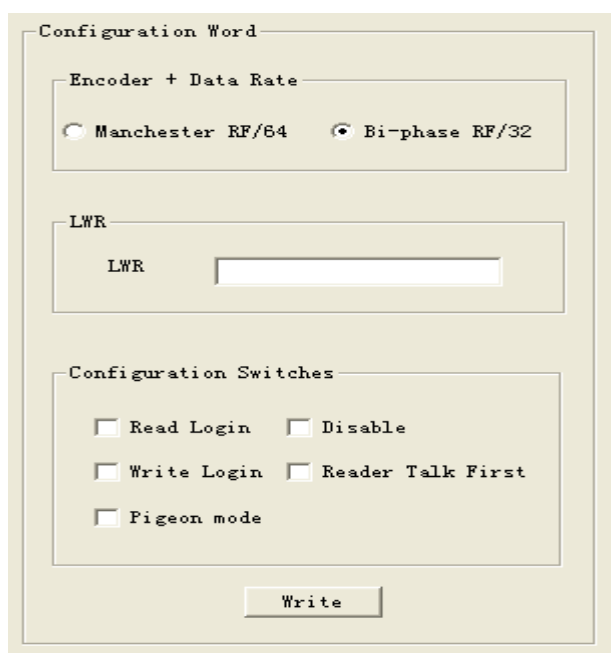
☐ Word 4 ☐ Word 5 ☐ Word 6 ☐ Word 7

☐ Word 8 ☐ Word 9 ☐ Word A ☐ Word B

☐ Word C ☐ Word D ☐ Word E

How to set configuration word

Refer to EM4205 / EM4305 datasheet in detail operation



Configuration Word

Encoder + Data Rate

☐ Manchester RF/64 ☒ Bi-phase RF/32

LWR

LWR

Configuration Switches

☐ Read Login ☐ Disable

☐ Write Login ☐ Reader Talk First

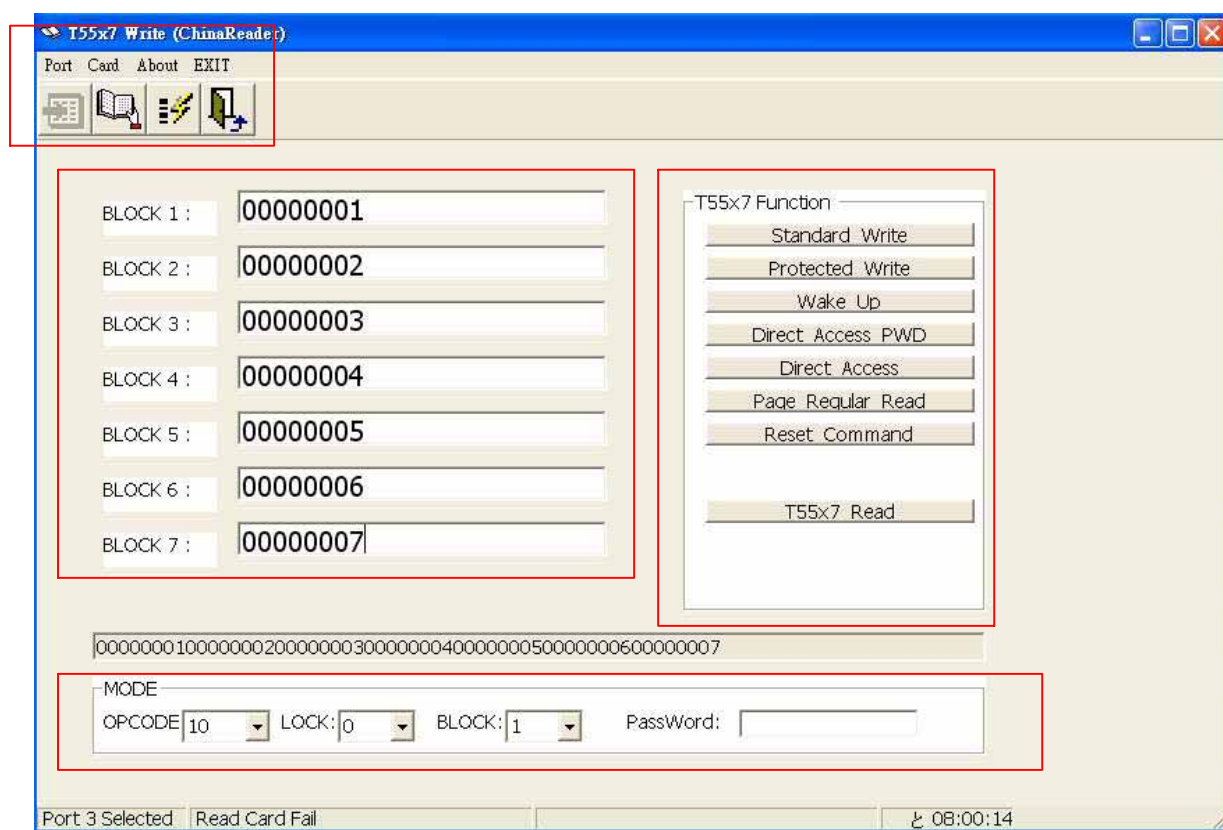
☐ Pigeon mode

T5567 Reader/writer Demo program user guide

[1] copy full directory from the CD path : \T5567\demo program to your local PC

remake : The demo program can not be run from CD directly

[2] run the program from the path : \T5567\demo program\rfid.exe



Port : select correct virtual com port No.

Card : No Function for this model



: this icon No Function

BLOCK : Block 1 TO Block 7 (7 x 32 bit data memory) – Refer to T55x7 datasheet in detail

T55x7 Function : Pls refer to T55x7 datasheet for the application in detail

MODE :

OPCODE : 4 mode selection – 00, 10, 01 & 11

LOCK : 0 – unlock / 1 - lock

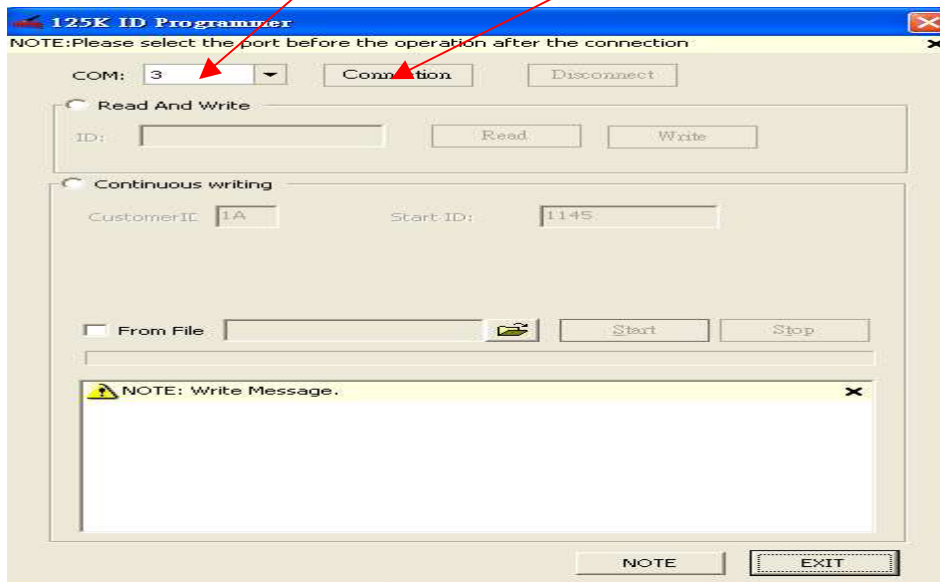
Block : select Block 1 to 7

Password : entry password

Pls refer to T55x7 datasheet for the application in detail

125K EM4100 ID programmer user guide

- [1] run the program from the path : \T5567\ID programmer\ID programmer.exe
- [2] select the correct "com port" and click on "connect"



How to duplicate a EM4100 or compatible card

- [1] select "Read and Write" and place the original EM4100 card on the reader
- [2] click on "Read" and card's ID will be shown here
- [3] take away the original EM4100 card and put a "T5567" card on the reader
- [4] click on "Write" and "Write success" message will show if write success

